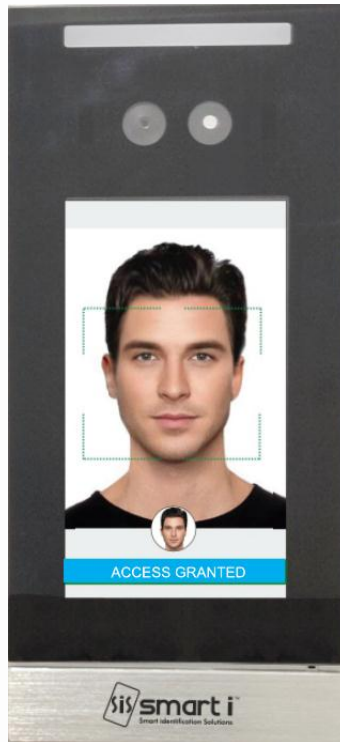


smartFACE series

Model No:SBF1030-H5 *series*

5 inch Face Biometric Recognition Terminal



General Description:

Intelligent Face Biometric Device with 5 inch IPS display with wide viewing angles and faster response time. Linux based operating system with Dual Core Processor, 1 GB memory and 8G flash.

Main Features:

- 5 inch IPS HD display screen
- 2 megapixel dual camera
- Face recognition with Alarm warning
- Access restriction to unauthorized person
- Support real time live detection
- Unique live **face** recognition algorithm
- 3D noise reduction and FOG passing technology
- Audio-Voice playback in regional language for event

TECHNICAL SPECIFICATIONS

Brand Name	SBF1030-H5 Series
Display	5 inches IPS HD screen
Processor	Dual Core Processor + 1GB memory + 8G flash
Operating System	Linux Operating System
Sensor	1/2.8" Progressive Scan CMOS
Viewing angle	Vertical viewing angle: 30°; Horizontal viewing angle: 30°
Camera	Dual cameras with 2MP, 1920x1080,6mm lens
Audio	Voice playback in regional language
Recognition height	1.2~2.2 meters
Recognition distance	0.5~1.5 meters
Recognition time	Less than 0.5 seconds
Storage capacity	60,000 capture records
Face capacity	10,000
Network interface	1 RJ45 10M / 100M adaptive Ethernet port, Gigabit Ethernet port can be customized
Wi-Fi	*Optional
Communicate interface	1 ch RS485 interface
Wiegand interface	1ch Wiegand interface input/output
Alarm interface	1 ch fire in interface; 1 ch alarm out interface
Door Sensor	1 ch magnetic interface
Lock interface	1 ch lock interface
Doorbell interface	1ch doorbell interface
Reader	Mifare Smart Card Reader (13.56Mhz) *Optional
Operation mode	Face + Card
Tamper Alarm	Available
Power Supply	DC12V@2A
Operating Temp & Hum.	Temp: -30°C - +60°C, & Rh: 0~90%
Ingress Protection	IP54
Size in mm	205(L) x 95 (W) x 24.5(T) mm
Mounting	Wall Mounting
Weight	1 kg

Ordering Information

Model No	Description
SBF1030-H5	Smart biometric face recognition terminal with 10K users & 60K events + Access & Attendance + 2 megapixel dual camera + 5 inch IPS HD display + TCP/IP + RS485 + Weigand (In/Out)
SBF1030-WIFI-H5	Smart biometric face recognition terminal with 10K users & 60K events + Access & Attendance + 2 megapixel dual camera + 5 inch IPS HD display + TCP/IP + RS485 + Weigand (In/Out) + Wi-Fi
SBF1030-S-H5	Smart biometric face recognition terminal with 10K users & 60K events + Access & Attendance + 2 megapixel dual camera + 5 inch IPS HD display + TCP/IP + RS485 + Weigand (In/Out) + Mifare smart Card Reader
SBF1030-S-WIFI-H5	Smart biometric face recognition terminal with 10K users & 60K events + Access & Attendance + 2 megapixel dual camera + 5 inch IPS HD display + TCP/IP + RS485 + Weigand (In/Out) + Mifare smart Card Reader + WIFI

Note: Recommended software with smartFACE series product is SCMD-Duo

Note: Product images are for illustrative purposes only and may differ from the actual product. Some products may have an associated image or photo. These are for reference only and should be considered illustrative. Technical Specifications subject to change without any notice.

Smart-I Electronic Systems Pvt Ltd | Bhumi World Industrial Park | Building No D-7 | Unit No 250 to 253 | Pimpas, Bhiwandi | Thane - 421302, Maharashtra.INDIA

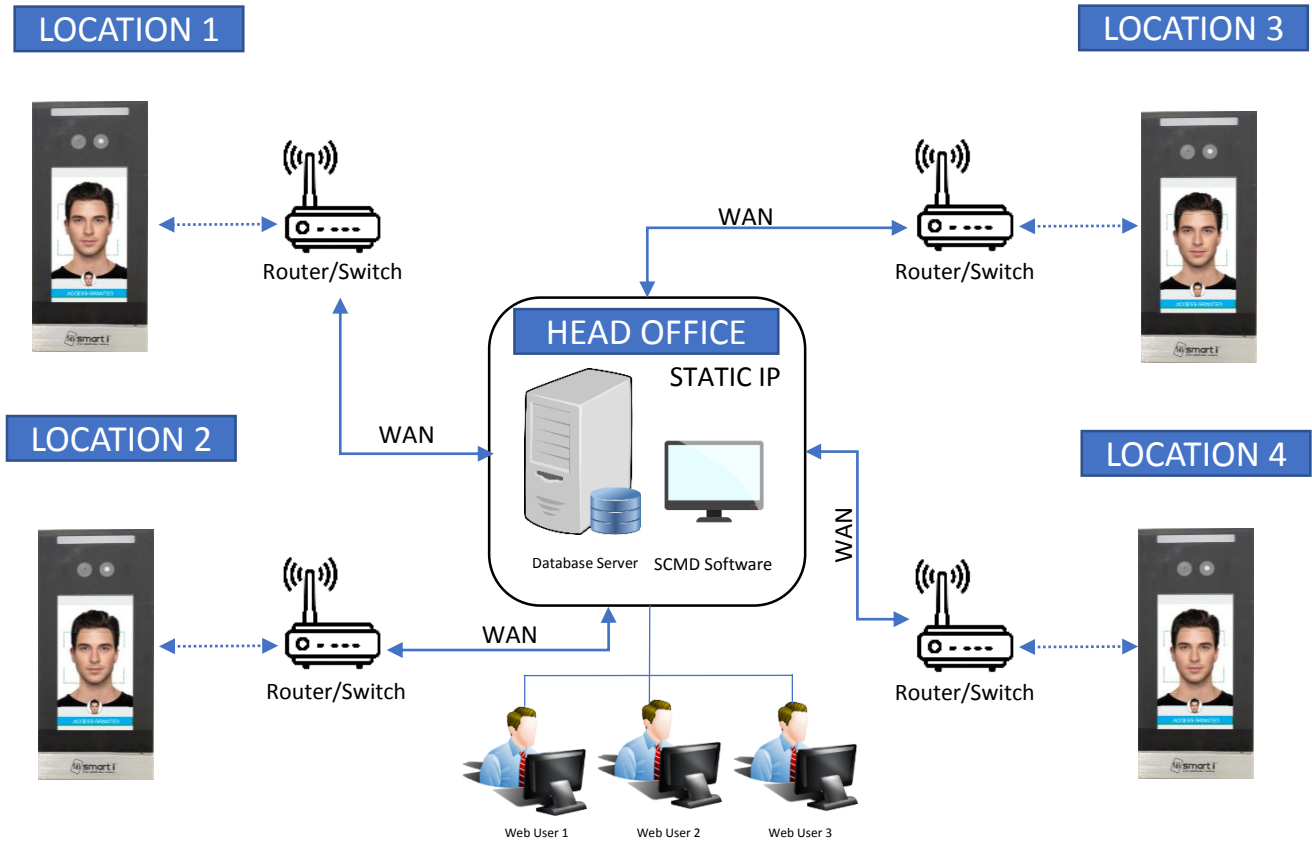
Copyright@Smart-I Electronic Systems Pvt. Ltd. All rights reserved. Technical Specifications, Model Number and Product availability subject to change without notice*.

Connect with us Today - www.smartisystems.com or +91-8767-247-247 | +91- 02522-616500

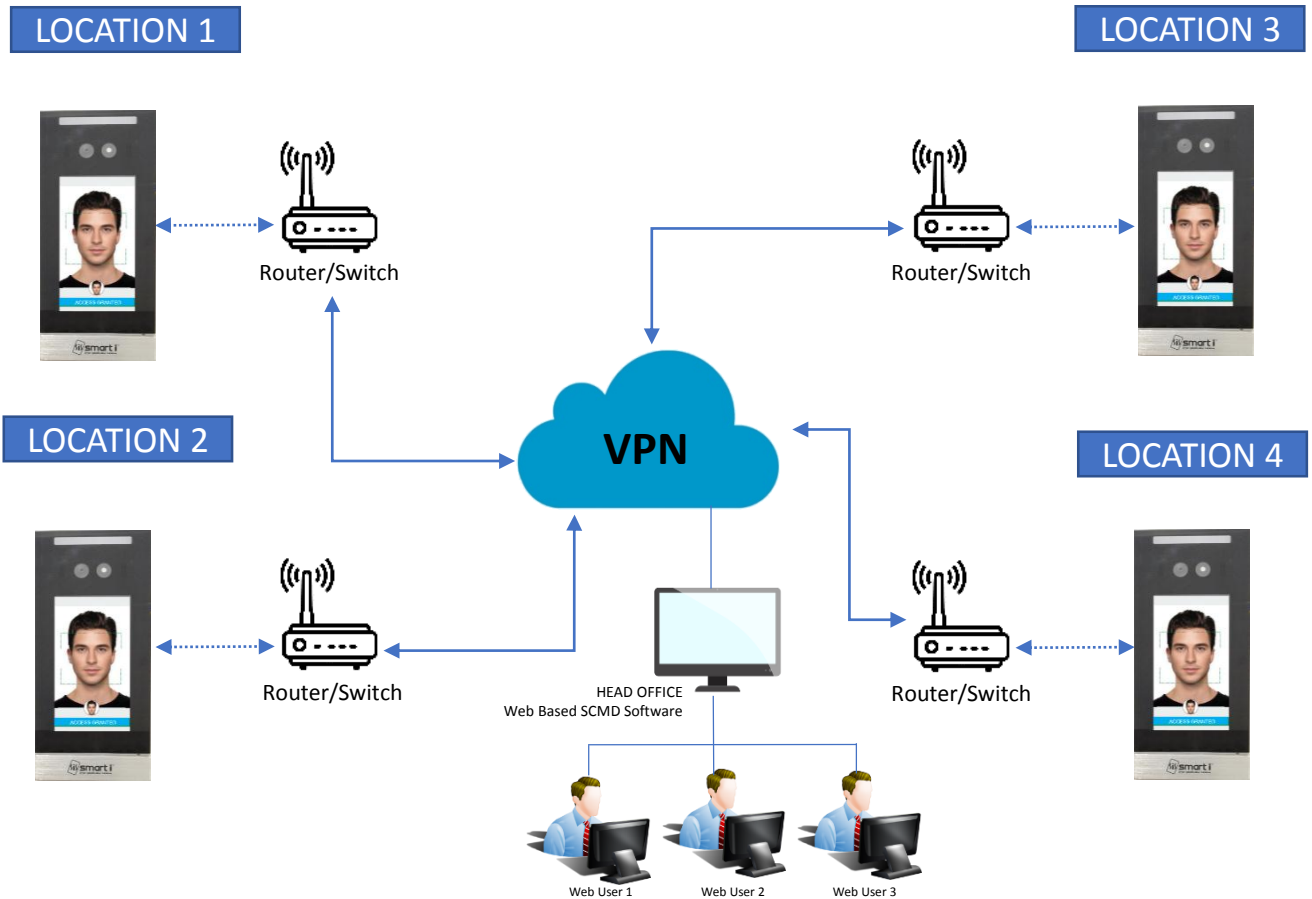
Email: enquiry@smartisystems.com | sales@smartisystems.com

TECHNICAL SPECIFICATIONS

TOPOLOGY - with STATIC IP



TOPOLOGY - with VPN



Note: Product images are for illustrative purposes only and may differ from the actual product. Some products may have an associated image or photo. These are for reference only and should be considered illustrative. Technical Specifications subject to change without any notice.

Smart-I Electronic Systems Pvt Ltd | Bhumi World Industrial Park | Building No D-7 | Unit No 250 to 253 | Pimpas, Bhiwandi | Thane - 421302, Maharashtra, INDIA

Copyright@Smart-I Electronic Systems Pvt. Ltd. All rights reserved. Technical Specifications, Model Number and Product availability subject to change without notice*. Connect with us Today - www.smartisystems.com or +91-8767-247-247 | +91- 02522-616500 Email: enquiry@smartisystems.com | sales@smartisystems.com

TECHNICAL SPECIFICATIONS

Software Key Features

- Multi Location Application
- Bulk Face & Card Activation.
- Integration With Mobile Apps
- Integrated HR Module
- Comprehensive Attendance Policy with Leave & Multiple Shift Management.
- Useful MIS Reports For Attendance & Access.
- Integrated Alarm Management
- Integrated Visitor Management

Note: Product images are for illustrative purposes only and may differ from the actual product. Some products may have an associated image or photo. These are for reference only and should be considered illustrative. Technical Specifications subject to change without any notice.

Smart-I Electronic Systems Pvt Ltd | Bhumi World Industrial Park | Building No D-7 | Unit No 250 to 253 | Pimpas, Bhiwandi | Thane - 421302, Maharashtra.INDIA

Copyright@Smart-I Electronic Systems Pvt. Ltd. All rights reserved. Technical Specifications, Model Number and Product availability subject to change without notice*.
Connect with us Today - www.smartisystems.com or +91-8767-247-247 | +91- 02522-616500
Email: enquiry@smartisystems.com | sales@smartisystems.com